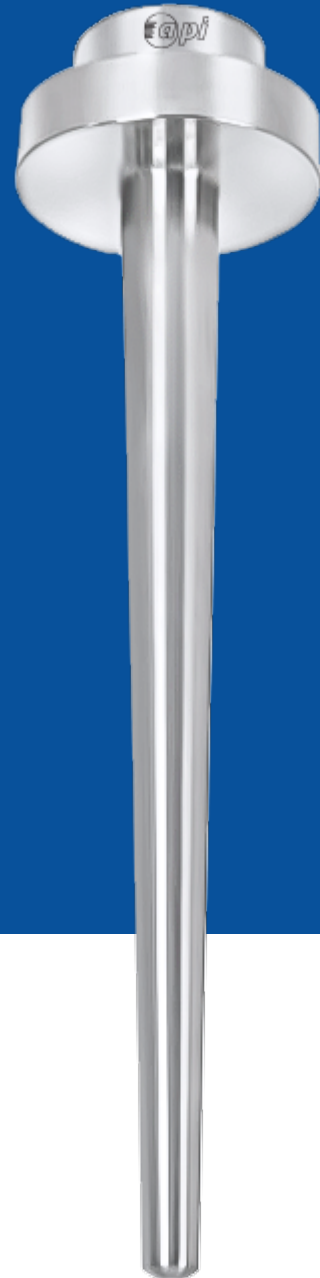


BAR STOCK VANSTONE

MODEL
X7.03



PRODUCT DESCRIPTION

These Thermowells are machined from solid bar stock and mounted between mating flanges for process insertion. This design is suitable for all type of RTD's, Thermocouples, mechanical as well as digital thermometers. Vanstone type thermowell is produced without any welding process by processing the whole round bar. Since it does not involve any welding process, it is used when high pressure, high velocity fluid and corrosive process media such as penetrating gas exist, and serving to isolate and protect from any leakage.



BAR STOCK VANSTONE

MODEL X7.03

KEY FEATURES

- Design as per PTC 19.3
- These thermos-well are machine from solid bar stock & Suitable for high pressure application.
- This design is suitable for all type of RTD's, Thermocouples, mechanical as well as digital thermometer

APPLICATION

- Chemical Plants
- Petrochemical Plants
- Engineering Plants
- On shore
- Off shore & other similar process industries

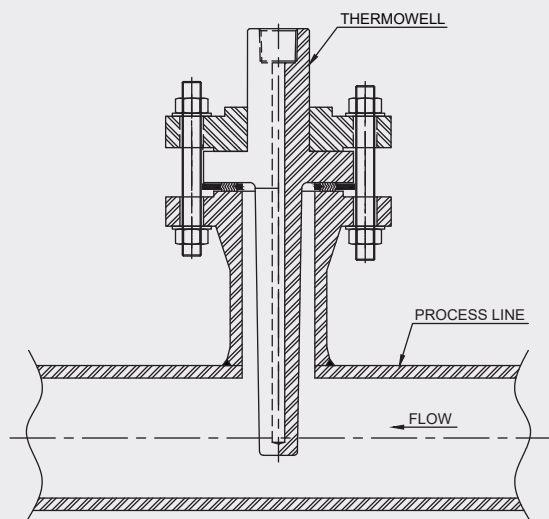
SPECIFICATIONS

Design	:	ASME PTC 19.3
Instrument Connection	:	1/2" NPT (F)
Collar Thickness	:	9.52 mm
Collar Diameter	:	Suitable to raise face
Bore diameter	:	Ø7 mm
Tip thickness	:	5 mm
Lagging extension (Including Collar)	:	50 mm
Head Diameter	:	Ø28 mm
Shank Style	:	Straight, Taper, Reduced Tip, Partial Taper

MATERIAL OF CONSTRUCTION

Well material : SS 316

DIMENSIONAL DRAWINGS

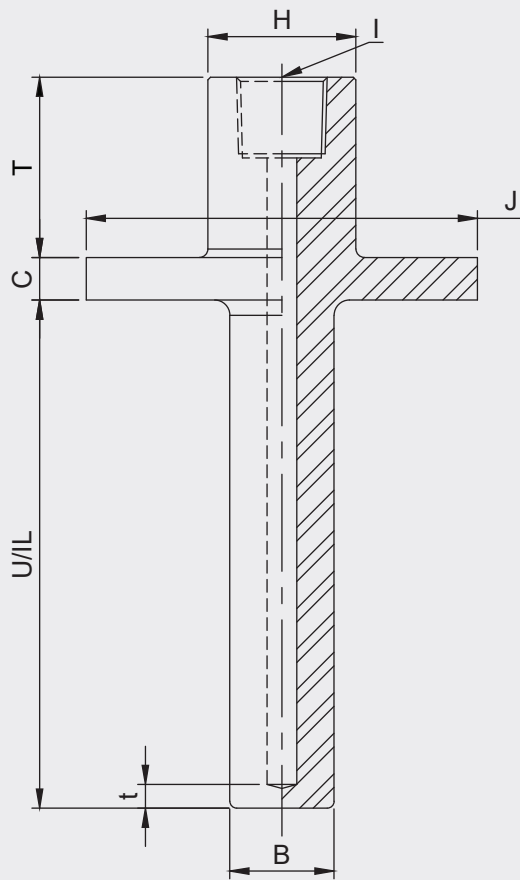


BAR STOCK VANSTONE

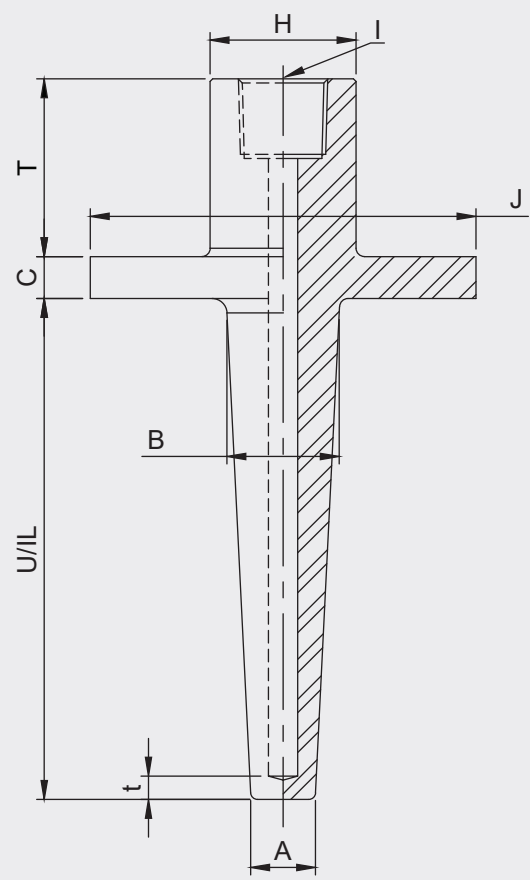
MODEL X7.03

DIMENSIONAL DRAWINGS

Straight



Taper



A - Minor Diameter B - Major Diameter C - Collar Thickness
 H - Head Size I - Instrument Connection J - Collar Diameter
 U/IL - Insertion Length t - Tip Thickness TL - Taper Length

D - Bore Diameter
 T - Extension Length
 RL - Reduced Tip Length

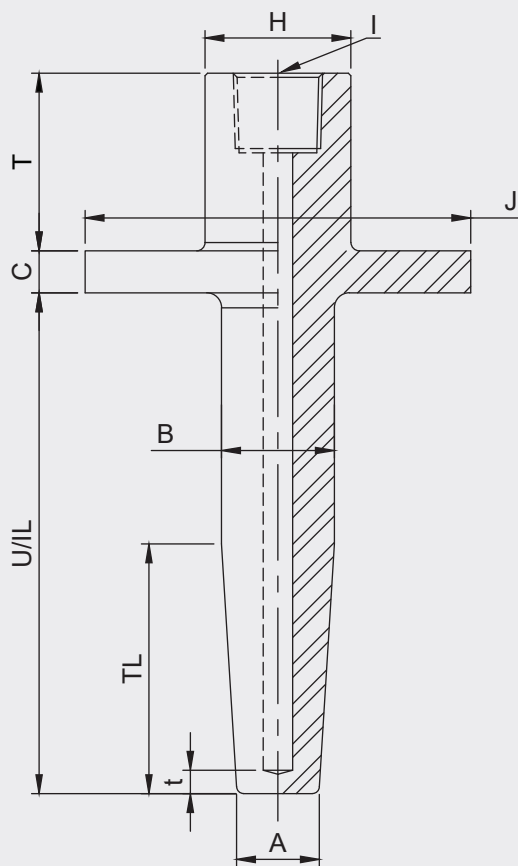
Important Notes: • Above drawings are not to scale • All Dimension are in mm

BAR STOCK VANSTONE

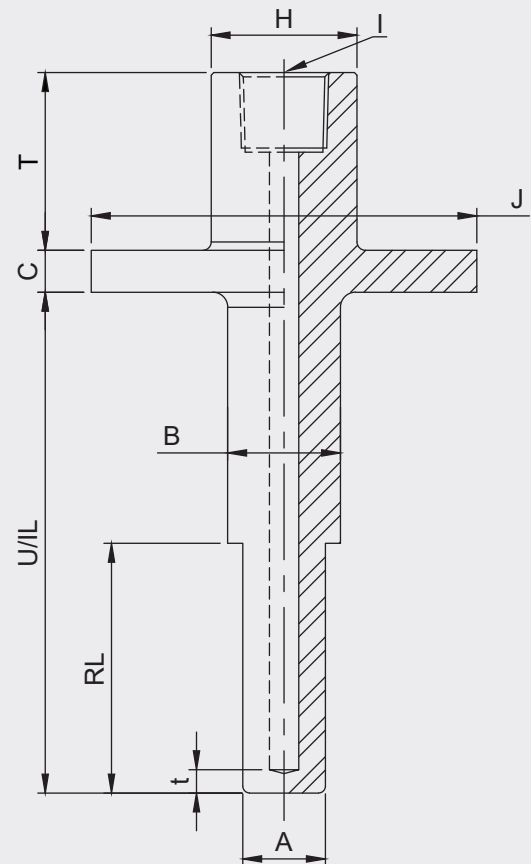
MODEL X7.03

DIMENSIONAL DRAWINGS

Partail Taper



Reduced Tip



A - Minor Diameter B - Major Diameter C - Collar Thickness
 H - Head Size I - Instrument Connection J - Collar Diameter
 U/IL - Insertion Length t - Tip Thickness TL - Taper Length

D - Bore Diameter
 T - Extension Length
 RL - Reduced Tip Length

Important Notes: • Above drawings are not to scale • All Dimension are in mm

BAR STOCK VANSTONE

MODEL X7.03

MODEL CODING & ORDERING INFORMATION

DESCRIPTION	CODE	X7.03	ST	CS	12NF	CD1	CT1	FF	T40	XXX	RH	D07	t5	XXX
Model Bar Stock Vanstone	X7.03	X7.03												
Version Straight	ST		ST											
Straight Reduced Tip	SR													
Partial Taper	PT													
Full taper	FT													
Well Material Carbon Steel	CS			CS										
SS 304	S4													
SS 310	S1													
SS 316	S6													
SS 316L	SL													
SS 316 / SS 316L	DC													
Duplex SS 2205	DU													
ASTM A350 LF2	F2													
Monel 400	M4													
Inconel 625	I5													
Inconel 825	I2													
Hast C-276	HC													
Instrument Connection ½" NPT (F)	12NF				12NF									
½" BSP (F)	12BF													
¾" NPT (F)	34NF													
¾" BSP (F)	34BF													
M20 × 1.5 (F)	M20F													
Collar Diameter Suitable to ANSI 1"RF Flange 51 mm	CD1					CD1								
Suitable to ANSI 1½"RF Flange 73mm	CD2													
Suitable to ANSI 2"RF Flange 92 mm	CD3													
As per customer specify	XXX													
Collar Thickness 3/8" (9.52mm Thk)	CT1						CT1							
Collar Facing Flat face	FF							FF						
Ring Tong Joint	XX													
Lagging Extension 'T' 40 mm Round Standard	T40								T40					
Customer Specific	XXX													
Finished Head Size 'A' Customer Specific	XXX									XXX				
Type of Head Rounded Headed	RH										RH			
Bore Diameter 'D' 7 mm	D07											D07		
9 mm	D09													
11 mm	D11													
Customer Specific	XXX													
Tip Thickness 't' 5 mm	t5												t5	
Customer Specific	XXX													
Insertion Length 'U/IL' Please specify in 'mm' e.g. for 200 mm mention IL200mm	XXX													XXX

BAR STOCK VANSTONE

MODEL X7.03

TABLE - 1

STRAIGHT	STRAIGHT REDUCED TIP	PARTIAL	FULL TAPER
Major Diameter 'B' Please Specify in 'mm' e.g. for 22 mm, mention B22	Major Diameter of Step 'B' Please Specify in 'mm' e.g. for 22 mm, mention B22 Minor Diameter of Step 'A' Please Specify in 'mm' e.g. for 18 mm, mention A18 Length of Step 'RL' Please Specify in 'mm' e.g. for 100 mm, Step Length from tip, Specify RL100	Major Diameter of Taper 'B' Please Specify in 'mm' e.g. for 22 mm, mention B22 Minor Diameter of Taper 'A' Please Specify in 'mm' e.g. for 18 mm, mention A18 Length of Taper 'T' Please Specify in 'mm' e.g. For Taper length from Tip, from tip of 150mm, Specify LT150	Major Diameter of Taper 'B' Please Specify in 'mm' e.g. for 22 mm, mention B22 Minor Diameter of Taper 'A' Please Specify in 'mm' e.g. for 18 mm, mention A18

MODEL CODING & ORDERING INFORMATION

DESCRIPTION	CODE	X20
Other Options		
Material Test Certificate	X17	
Tested to NACE Standards	X20	X20
Certification for Oxygen Service	X21	
Plug & Chain in SS	X77	
IGC Test	X79	
Certification for Hydrogen Service	X81	
WFC as per PTC 19.3TW:2010	X82	
Radiography for Welding	X83	
Ultrasonic Test	X85	
Chemical Composition Test	X86	
PMI Test	X89	

SAMPLE ORDERING CODE:

X7.03-ST.CS.12NF.CD1.CT1.FF.T40.XXX.RH.D07.t5.XXX.X20

Note: Specifications and dimensions given in this product catalogue represents the state of engineering at the time of printing. Modifications may take place and material specified may be replaced by others without prior notice.