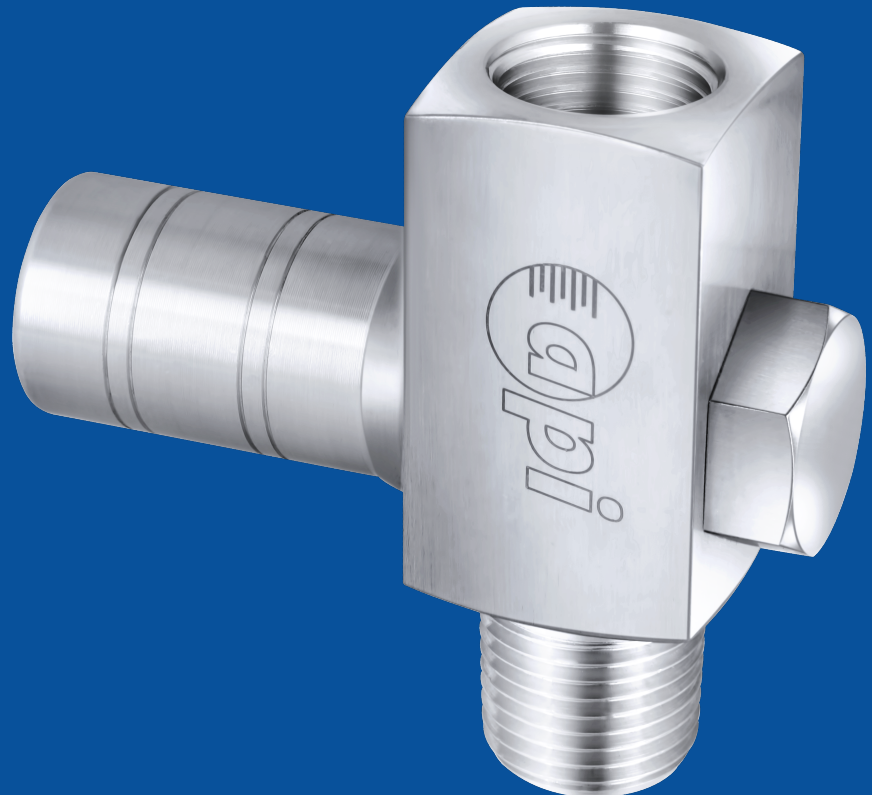


GAUGE SAVER

MODEL
X5.04



PRODUCT DESCRIPTION

Gauge savers are normally a device that prevents overpressuring. The Gauge Saver (Pressure Limit Valve) is used where the process pressure exceeds the over range limit of the pressure instrument. When the process pressure exceeds the preset pressure, Gauge Saver shuts off the pressure to the instrument and thereby prevents damage of the sensing element and protects the calibration. They function in a similar fashion as relieve valve, only in reverse, with spring that will close off to the gauge if the pressure goes above the set pressure.



GAUGE SAVER

MODEL X5.04

KEY FEATURES

- Adjustable range
- Nominal Pressure up to 400 kg/cm²
- Over pressure up to 600 kg/cm²
- Bellow type & piston type model

SPECIFICATIONS

Overload Protector type :	S01- Below type S02 - Piston type
Adjustable Range :	S01 - 0.6 kg/cm ² to 0.8 kg/cm ² S02 - 1 kg/cm ² to 400 kg/cm ²
Operating Temp. :	-20°C to 120°C
Max. Working Pressure. :	Max 600 kg/cm ²

APPLICATION

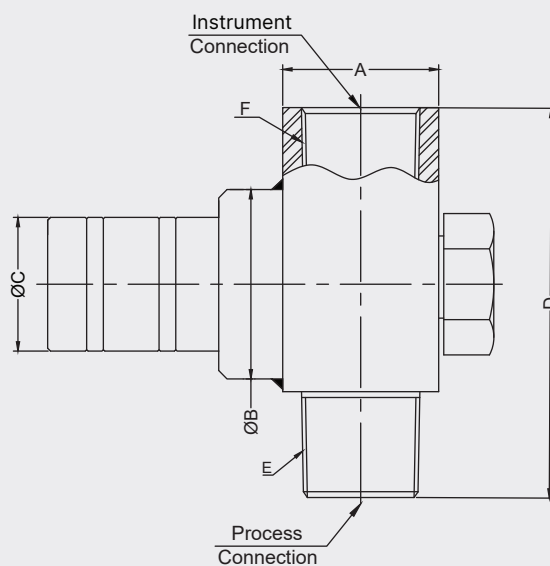
- Over-pressure protection for gauges, switches & Transmitters
- Designed to protect Pressure instruments from over pressure exceeding the specified pressure range by sudden and excessive pressure fluctuation from surge or spike.
- Widely used in mechanical engineering and plant construction, power station, mining, environmental technology, chemical and petrochemical.

MATERIAL OF CONSTRUCTION

Body	: SS 316
'O' Ring	: Viton

DIMENSIONAL DRAWINGS

Bellow Operated



A	ØB	ØC	D	F	E
Sq.27.5 x 28.5	35	70	Ø5	½" NPT(F)	½" NPT(M)

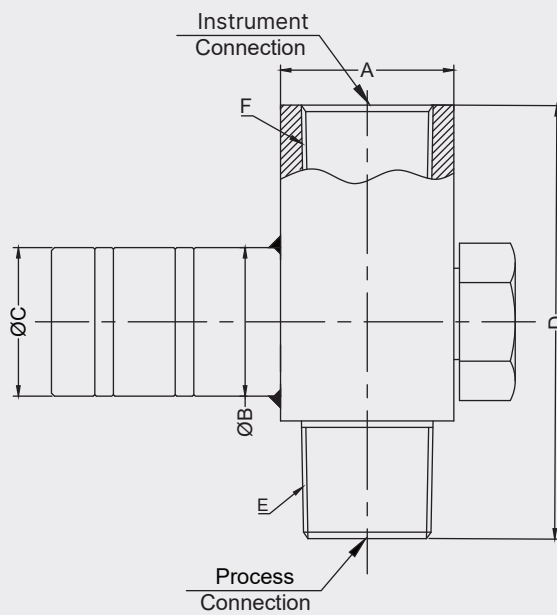
Important Notes: Above drawings are not to scale. All Dimension are in mm

GAUGE SAVER

MODEL X5.04

DIMENSIONAL DRAWINGS

Piston operated



A	ØC	D	F	E
Sq.28	24	70	½" NPT(F)	½" NPT(M)

Important Notes: Above drawings are not to scale. All Dimension are in mm

GAUGE SAVER

MODEL X5.04

MODEL CODING & ORDERING INFORMATION

DESCRIPTION	CODE	X5.04	PO	B01	S6	38BM.38BF	X17
Model Gauge Saver	X5.04	X5.04					
Version Bellow Operated Piston Operated	BO PO		PO				
Adjustable Range Type Adjustable range (kg/cm ² or bar)							
Bellow 0.6 to 0.8	B01			B01			
Piston 1 to 4	P01						
Piston 4 to 6	P02						
Piston 7 to 16	P03						
Piston 10 to 40	P04						
Piston 60 to 80	P05						
Piston 100 to 160	P06						
Piston 200 to 400	P07						
Body Material SS 316 SS 316L Monel 400 Hast C-276	S6 SL M4 HC				S6		
Connection 3/8" BSP (M x F) 3/8" NPT (M x F) 1/2" BSP (M x F) 1/2" NPT (M x F) M20 x 1.5 (M x F)	38BM.38BF 38NM.38NF 12BM.12BF 12NM.12NF M20M.M20F					38BM.38BF	
Other Options Material test certificate Tested to NACE Standard Oxygen Service	X17 X20 X21						X17

SAMPLE ORDERING CODE:

X5.04-PO.B01.S6.38BM.38BF.X17

Note: Specifications and dimensions given in this product catalogue represents the state of engineering at the time of printing. Modifications may take place and material specified may be replaced by others without prior notice.