

GAUGE COCK

MODEL
X5.01



PRODUCT DESCRIPTION

Pressure gauge cocks are intended to isolate the pressure gauge from the pressure media in order to enable inspection or replacement of the gauge where the pressure is continuously pulsating. Gauge Cocks provide an economical way to shut off the flow of air to the pressure instrument, thereby allowing the instrument to be isolated from the pressure media or removed from service. Gauge Cocks are constructed from brass and are intended for use on air lines where leakage is not of concern. These gauge cock can be used to isolate the gauge from process or to bypass the process for gauge maintenance.



GAUGE COCK

MODEL X5.01

KEY FEATURES

- Bakelite cover on handle for grip
- Working Pressure up to 100 kg/cm²
- Working Temperature up to 180°C
- Air Vent hole for drain

APPLICATION

- Hydraulic machines
- Compressor
- Process plants
- Clean Air
- Gases
- Non crystallized liquid
- Isolation of pressure gauges, Transmitters

SPECIFICATIONS

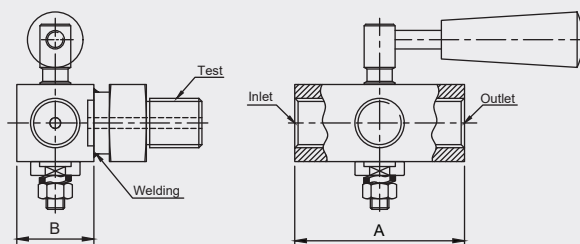
Working Pressure	: 100 kg/cm ²
Working Temp.	: Up to 180 °C
Connection	: ½" BSP (F X F) for 2 Way ½" BSP (M X F X F) for 3 Way

MATERIAL OF CONSTRUCTION

Body	: SS 316
Handle	: SS 304 with Bakelite cover
Gasket Seal	: PTFE

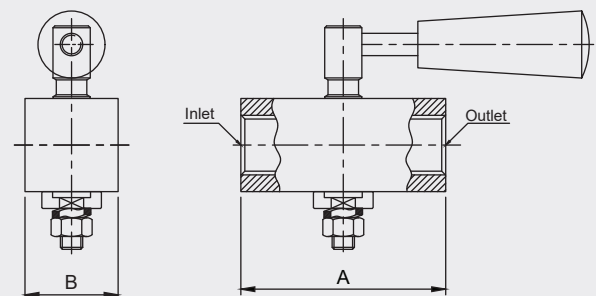
DIMENSIONAL DRAWINGS

2-way Sketch



Size	A			B
	FxF	MxF	MxM	
1/4"	50	55	60	19
3/8"	55	60	65	25
1/2"	60	70	70	25

3-way Sketch



Size	A	B
	F x F x F	
1/4"	70	19
3/8"	75	25
1/2"	80	25

Important Notes: Above drawings are not to scale. All Dimension are in mm

GAUGE COCK

MODEL X5.01

MODEL CODING & ORDERING INFORMATION

DESCRIPTION	CODE	X5.01	2W	S4	14BF.14BF	14BM.14BF.14BF	X17
Model							
Gauge Cock	X5.01	X5.01					
Version							
2 Way	2W		2W				
3 Way	3W						
Body Material							
SS 304	S4			S4			
SS 316	S6						
2 Way -size & end connection (Inlet x Outlet)							
¼" BSP (F x F)	14BF.14BF				14BF.14BF		
¼" BSP (M x F)	14BM.14BF						
¼" BSP (M x M)	14BM.14BM						
¼" BSP (F x F)	38BF.38BF						
⅜" BSP (M x F)	38BM.38BF						
⅜" BSP (M x M)	38BM.38BM						
½" BSP (F x F)	12BF.12BF						
½" BSP (M x F)	12BM.12BF						
½" BSP (M x M)	12BM.12BM						
¼" NPT (F x F)	14NF.14NF						
¼" NPT (M x F)	14NM.14NF						
¼" NPT (M x M)	14NM.14NM						
⅜" NPT (F x F)	38NF.38NF						
⅜" NPT (M x F)	38NM.38NF						
⅜" NPT (M x M)	38NM.38NM						
½" NPT (F x F)	12NF.12NF						
½" NPT (M x F)	12NM.12NF						
½" NPT (M x M)	12NM.12NM						
3 Way - size & end connection (Inlet x Outlet x Outlet)							
¼" BSP (M X F x F)	14BM.14BF.14BF					14BM.14BF.14BF	
¼" NPT (M X F x F)	14NM.14NM.14NF						
½" BSP (M X F x F)	12NM.12NF.12NF						
⅜" BSP (M X F x F)	38BM.38BF.38BF						
⅜" NPT (M X F x F)	38NM.38NF.38NF						
½" NPT (M X F x F)	12NM.12NF.12NF						
Other Options							
Material test certificate	X17						X17
Tested to NACE Standard	X20						
Oxygen Service	X21						
Threaded Hex plug for vent hole	X39						

SAMPLE ORDERING CODE:

X5.01-2W.S4.14BF.14BF.14BM.14BF.14BF.X17

Note: Specifications and dimensions given in this product catalogue represents the state of engineering at the time of printing. Modifications may take place and material specified may be replaced by others without prior notice.