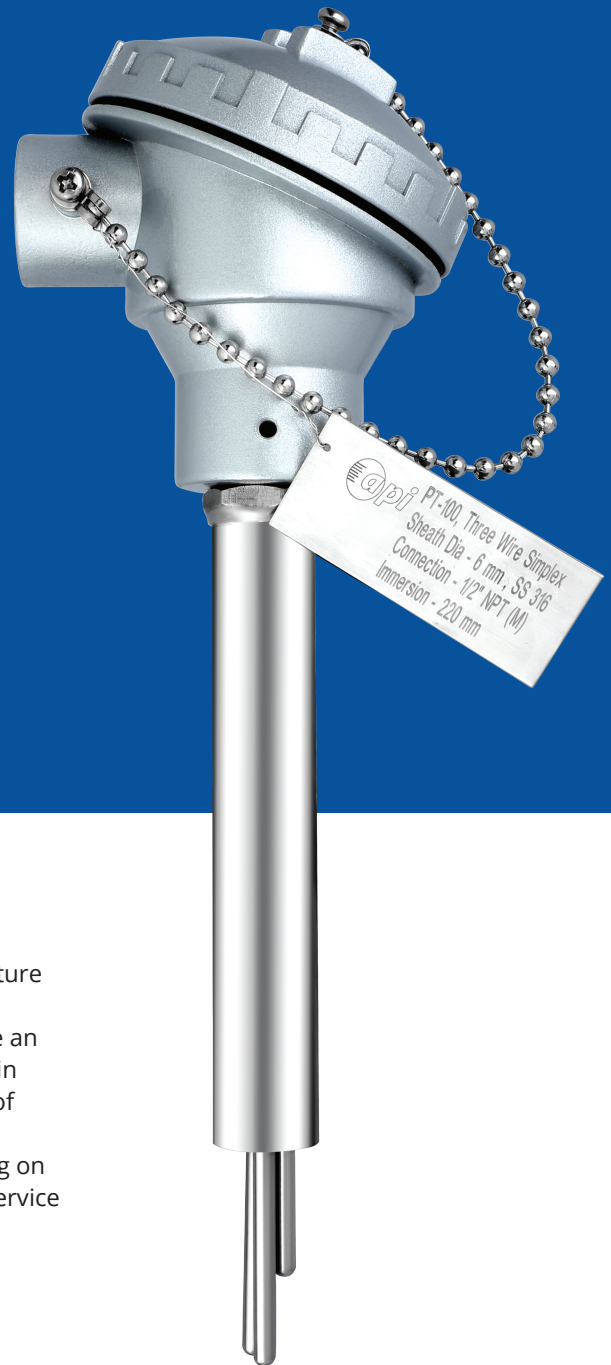


MULTIPOINT RTD WITH PROTECTING TUBE

MODEL
S1.06



PRODUCT DESCRIPTION

Multi point RTD are used to measure more than one temperature point through a single access point. The sensor has multiple temperatures input along the length of the sensor to calculate an accurate temperature profile. These sensors are mostly used in chemical and petroleum industries for temperature profiling of reactors, crackers, and liquefied gas in tanks. The design and dimensions of the multi-point thermocouples differ depending on the shape and size of the container, position of the sensors, service required, pressure, temperature



MULTIPOINT RTD WITH PROTECTING TUBE

MODEL S1.06

KEY FEATURES

- Mineral insulated Cable
- Available in various connections & sheath diameters
- Standard followed : IEC-751 / DIN 43760

APPLICATION

- Oil & Gas applications
- Chemical & Petrochemical
- Water & Waste-water treatment
- Food & Beverages
- Power plants

SPECIFICATIONS

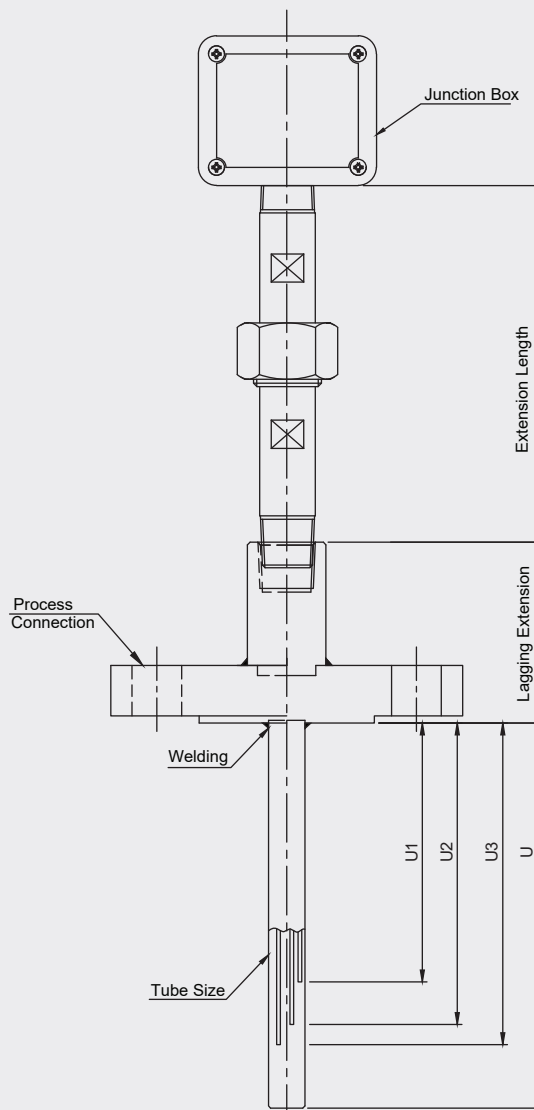
No. of elements	:	Simplex
Elements Type	:	Pt-100
Range	:	-70...500°C
Accuracy	:	Class A as per IEC-751 / DIN 43760
No of Points	:	Three
Wire Configuration	:	3 wire system
Sheath Diameter	:	3 mm
Junction Box Type	:	Weatherproof, IP68 in Die Cast Aluminum
No. of Conduit Entry	:	Three
Conduit Entry Size	:	3/4" ET (F)
Junction Box Extension type	:	Junction Box with nipple union of CS
Protecting Tube Size	:	1/2" Sch. 40
Flange Type/Size	:	1 1/2" 150#RF
Flange Material	:	SS 316
Immersion Length	:	1500 mm
Extension Length	:	150 mm

MULTIPOINT RTD WITH PROTECTING TUBE

MODEL
S1.06

DIMENSIONAL DRAWINGS

Multi Point



Important Notes: Above drawings are not to scale. All dimension are in mm

MULTIPOINT RTD WITH PROTECTING TUBE

MODEL S1.06

MODEL CODING & ORDERING INFORMATION

DESCRIPTION	CODE	S1.06	GT	1	S	1	2	31	B03	S6	JB1	1	E2	TD1	S6	F	X
Model Multipoint RTD with protecting tube	S1.06	S1.06															
Version Guide Tube	GT		GT														
Spring Loaded	SL																
Element Type Pt-100	1			1													
No. of Element Simplex	S				S												
Duplex	D																
Accuracy Class A	1					1											
Class B	2																
No. of Points 2 RTD	2						2										
3 RTD	3																
4 RTD	4																
5 RTD	5																
As per customer specific	XX																
Wire Configuration 3 wire system	31							31									
Sheath Diameter Ø3.0 mm	B03								B03								
Ø6.0 mm	B06																
Ø8.0 mm	B08																
Sheath Material SS 316	S6									S6							
Junction Box Type Weather proof IP-68 Junction box in Die cast aluminum	JB1										JB1						
Flameproof IP-68 Gr. IIA,IIB Junction box in Die cast aluminum	JB2																
Explosion Proof IP-68 Junction box in Die cast aluminum	JB3																
No. of Conduit Entry One	1											1					
Two	2																
Three	3																
Five	5																
Conduit Entry Size 1/2" NPT (F)	E2												E2				
3/4" ET (F)	E3																
3/4" NPT (F)	E5																
Guide Tube Diameter Ø6.0 mm	TD1													TD1			
Ø8.5 mm	TD2																
Ø10.0 mm	TD3																
None	XXX																
Guide Tube Material SS 316	S6														S6		
Junction Box Extension Type With Flexible hose	F																F
Protecting tube	T																
Head Extension type Head only	X																X
Head with nipple extension	E																
Head with nipple union extension	U																
Head with nipple union nipple extension	N																

MULTIPOINT RTD WITH PROTECTING TUBE

MODEL S1.06

MODEL CODING & ORDERING INFORMATION

DESCRIPTION	CODE	N4	S6	XX.XX.XX	XX	XX	XX	XX	A10	X16
Protecting Tube										
Size	OD in mm	Wall Thk. In mm								
½" Sch.40	21.3	2.77								
½" Sch.80	21.3	3.74								
1" Sch.40	33.4	3.4								
1" Sch.80	33.4	4.5								
1.5" Sch.40	48.3	3.7								
1.5" Sch.80	48.3	5.1								
2" Sch.40	60.3	3.9								
2" Sch.80	60.3	5.5								
Protecting Tube Material										
SS 316			S6							
SS 316L										
SS 310										
Multipoint Insertion Length										
U1, U2, U3,...Specify in mm		XX.XX.XX		XX.XX.XX						
Immersion Length										
Specify in mm		XX			XX					
Extension Length										
Specify in mm		XX				XX				
Junction Box Extension Length										
Specify in mm		XX					XX			
Flange Type/Size										
As per table -1		XX							XX	
Flange Material										
ASTM A105		A10								A10
A182 F316		F31								
As per customer specific		XXX								
Other Options										
Plug for conduit entry in carbon steel		XPC								
Plug for conduit entry in SS 304		XPS								
Plug in conduit entry in AL		XCA								
S.C Cable gland in Nickel plated Brass-WP		G01								
D.C Cable gland in Nickel plated Brass-WP		G02								
D.C Cable gland in SS 316-WP		G03								
D.C Cable gland in SS 304-WP		G04								
D.C Cable gland in Nickel plated Brass-FLP		G05								
D.C Cable gland in SS 304-FLP		G06								
D.C Cable gland in SS 316-FLP		G07								
D.C Cable gland in Nickel plated Brass-Ex Proof		G08								
D.C Cable gland in SS 316-Ex Proof		G09								
D.C Cable gland in SS 304-Ex Proof		G10								
Head with Nipple union extension 100mm in CS		X15								
Calibration Certificate		X16								
Plug for conduit entry in SS 316		X23								X16
Head with Nipple union extension 100mm in SS 304		X41								
Head with Nipple union extension 100mm in SS 316		X42								
Head with Nipple union nipple extension 100mm in CS		X43								
Head with Nipple union nipple extension 100mm in SS 304		X44								
Head with Nipple union nipple extension 100mm in SS 316		X46								

MULTIPOINT RTD WITH PROTECTING TUBE

MODEL S1.06

Table -1 AS PER ANSI B 16.5

NOMINAL SIZE	RATING/ CLASS	CODE	NOMINAL SIZE	RATING/ CLASS	CODE	NOMINAL SIZE	RATING/ CLASS	CODE	NOMINAL SIZE	RATING/ CLASS	CODE
1/2"	150	B09	1"	150	B21	1 1/2"	150	B33	2 1/2"	150	B45
	300	B10		300	B22		300	B34		300	B46
	600	B11		600	B23		600	B35		600	B47
	900	B12		900	B24		900	B36		900	B48
	1500	B13		1500	B25		1500	B37		1500	B49
	2500	B14		2500	B26		2500	B38		2500	B50
3/4"	150	B15	1 1/4"	150	B27	2"	150	B39	3"	150	B51
	300	B16		300	B28		300	B40		300	B52
	600	B17		600	B29		600	B41		600	B53
	900	B18		900	B30		900	B42		900	B54
	1500	B19		1500	B31		1500	B43		1500	B55
	2500	B20		2500	B32		2500	B44		2500	B56

SAMPLE ORDERING CODE:

S1.06-GT.1.S.1.2.31.B03.S6.JB1.1.E2.TD1.S6.F.X.N4.S6.XX.XX.XX.XX.XX.XX.XX.A10.X16

Note: Specifications and dimensions given in this product catalogue represents the state of engineering at the time of printing. Modifications may take place and material specified may be replaced by others without prior notice.