

# FLOAT & BOARD LEVEL GAUGE

MODEL  
M4.05



## PRODUCT DESCRIPTION

Float and Board is a simple economic level measuring instrument for large non pressurized storage tank. Its is a simple float and counter balancing mechanism, float inside the tank and counter weight (scale pointer) connected by the rope wire which is moving freely on the pulley assembly. When the storage tank is empty position, the float located inside the bottom of the scale pointer located at ZERO level on external scale. If the liquid level rise in the tank, the float move upper side and scale pointer move downward on the graduated scale to show liquid level inside the storage tank



# FLOAT & BOARD LEVEL GAUGE

## MODEL M4.05

### KEY FEATURES

- Easy Installation
- Float & Board follower type
- Float & Board gauges applicable up to 10 kg & up to 400°C

### SPECIFICATIONS

Mounting	: Side Mounted, Top Mounted
Type	: Guided & Un- Guided
Tension Flanges	: Cd-plated spring in CS enclosure
Pulley System	: Cd Plated steel ,PTFE bush & SS shaft
Process Connection	: Flanged & Screwed
Measuring Range	: Up to 20000mm
Least Count	: 25 mm
Max. Temp.	: Upto 400°C
Max. Pressure	: 10 kg

### APPLICATION

- Over & Underground tanks
- Custody transfer tanks
- Oil & Petroleum tanks
- Refinery
- Food
- Power
- Pharma

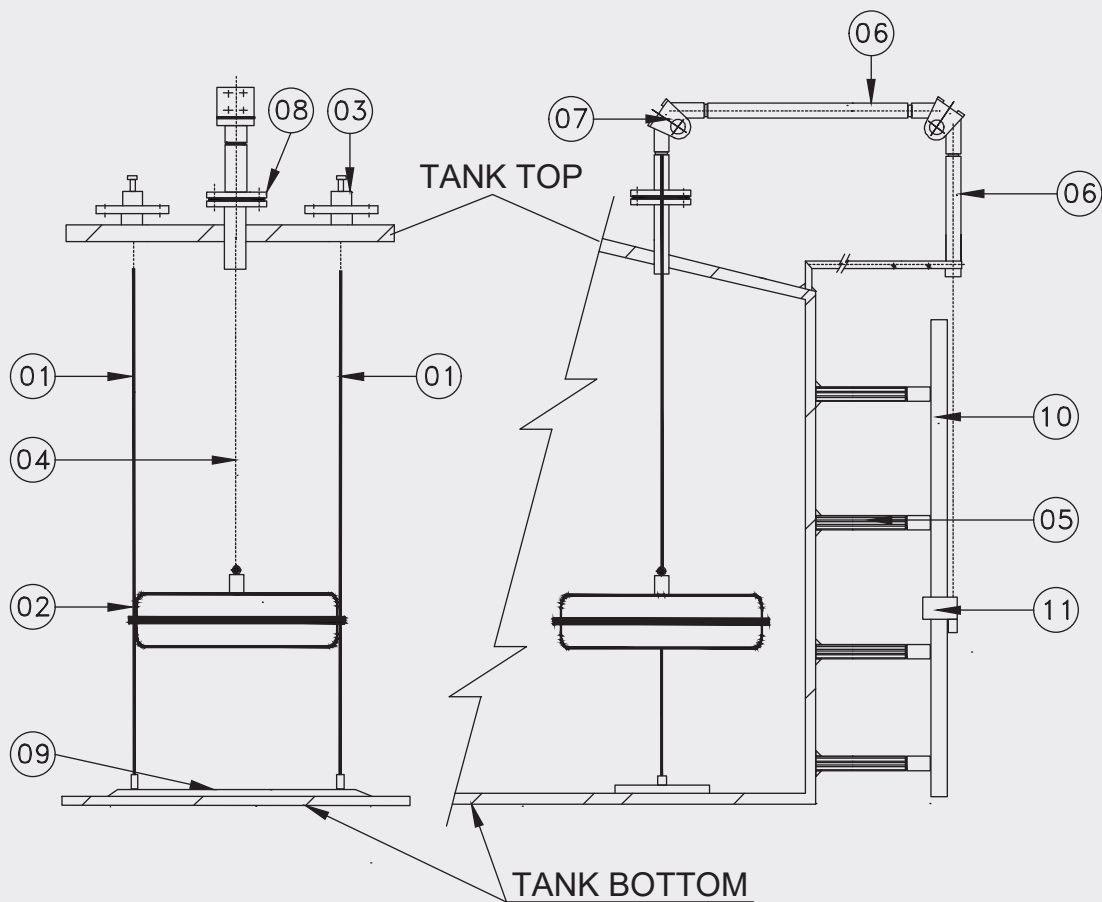
### MATERIAL OF CONSTRUCTION

Float	: SS 316
Guide Wire Rope	: SS 316
Float Wire Rope	: SS 316
Scale Board	: Aluminum White powder coated
Scale Bracket	: Powder Coated steel
Protection Tube	: Galvanized pipe
Anchor Plate	: CS / SS304 / SS316
Pointer	: Red steel powder coated
Pulley Housing	: Aluminum

# FLOAT & BOARD LEVEL GAUGE

MODEL  
M4.05

## DIMENSIONAL DRAWINGS



- |                             |                       |
|-----------------------------|-----------------------|
| 01 Guide Wire               | 06 Protection Tube    |
| 02 Float                    | 07 Pulley System      |
| 03 Tension Flanges Assembly | 08 Process Connection |
| 04 Float Wire               | 09 Anchor Plate       |
| 05 Scale Bracket            | 10 Scale Board        |
|                             | 11 Pointer            |

Important Notes: • Above drawings are not to scale • All Dimension are in mm

# FLOAT & BOARD LEVEL GAUGE

## MODEL M4.05

### MODEL CODING & ORDERING INFORMATION

DESCRIPTION	CODE	M4.05	GD	SB	CS	S4	S6	A2	S6	S4	S6	S4	AL	MS	S4
<b>Model</b>															
Float & Board Type Gauge	M4.05	M4.05													
<b>Type</b>															
Guided	GD		GD												
Un-Guided	UD														
<b>Mounting</b>															
Side Mounted	SB			SB											
Top Mounted	TB														
<b>Flange Material</b>															
Carbon Steel	CS				CS										
SS 304	S4														
SS 316	S6														
Polypropylene	PP														
<b>Tension Assembly</b>															
Carbon Steel	CS														
SS 304	S4					S4									
SS 316	S6														
None	XX														
<b>Float Material</b>															
SS 304	S4														
SS 316	S6						S6								
Polypropylene	PP														
<b>Scale Board Material</b>															
Aluminum White powder coated	A2							A2							
SS 304	S4														
SS 316	S6														
<b>Scale Bracket</b>															
Carbon Steel	CS														
SS 304	S4														
SS 316	S6								S6						
<b>Pointer</b>															
Carbon Steel	CS														
SS 304	S4									S4					
SS 316	S6														
<b>Wire Rope</b>															
SS 304	S4														
SS 316	S6											S6			
Polypropylene	PP														
<b>Guide Rope</b>															
SS 304	S4												S4		
SS 316	S6														
Polypropylene	PP														
None	XX														
<b>Pulley Housing</b>															
Aluminum	AL												AL		
SS 304	S4														
SS 316	S6														
<b>Guide Pipe</b>															
Mild Steel	MS													MS	
Stainless Steel	SS														
<b>Anchor Plate</b>															
Carbon Steel	CS														S4
SS 304	S4														
SS 316	S6														

# FLOAT & BOARD LEVEL GAUGE

## MODEL M4.05

### MODEL CODING & ORDERING INFORMATION

DESCRIPTION	CODE	XXX	X17
<b>Measuring Range</b> As per Customer Requirement	XXX	XXX	
<b>Other Options</b> ATEX Conformity acc. to RL 2014/34/EU II 2 GD Ex h T6 Material Test Certificate Tested to NACE Standard SS Tag Plates Hydrostatic Test Certificate	XAT X17 X20 X26 X97		X17

**Table -1 AS PER ANSI B 16.5**

NOMINAL SIZE	RATING/ CLASS	CODE	NOMINAL SIZE	RATING/ CLASS	CODE	NOMINAL SIZE	RATING/ CLASS	CODE	NOMINAL SIZE	RATING/ CLASS	CODE
1/2"	150	B09	1"	150	B21	1 1/2"	150	B33	2 1/2"	150	B45
	300	B10		300	B22		300	B34		300	B46
	600	B11		600	B23		600	B35		600	B47
	900	B12		900	B24		900	B36		900	B48
	1500	B13		1500	B25		1500	B37		1500	B49
	2500	B14		2500	B26		2500	B38		2500	B50
3/4"	150	B15	1 1/4"	150	B27	2"	150	B39	3"	150	B51
	300	B16		300	B28		300	B40		300	B52
	600	B17		600	B29		600	B41		600	B53
	900	B18		900	B30		900	B42		900	B54
	1500	B19		1500	B31		1500	B43		1500	B55
	2500	B20		2500	B32		2500	B44		2500	B56

### SAMPLE ORDERING CODE:

**M4.05-GD.SB.CS.S4.S6.A2.S6.S4.S6.S4.AL.MS.S4.XXX.X17**

Note: Specifications and dimensions given in this product catalogue represents the state of engineering at the time of printing. Modifications may take place and material specified may be replaced by others without prior notice.