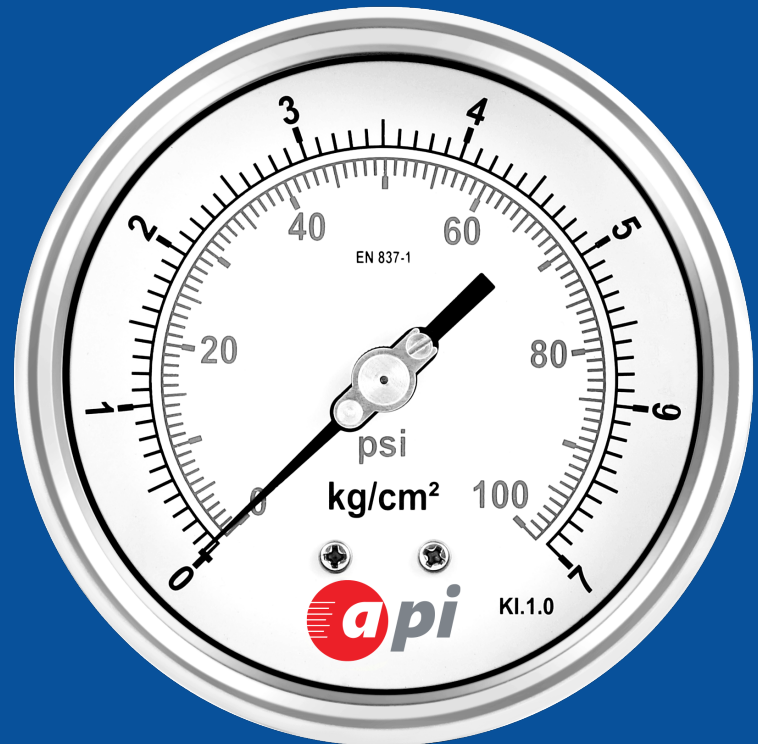


COMMERCIAL PRESSURE GAUGES

MODEL
M1.06



PRODUCT DESCRIPTION

Commercial gauges are general purpose pressure measuring instruments commonly used in Heating Ventilation Air Conditioning (HVAC) and Refrigeration. Industrial pressure gauge is suitable for production processes that would not block the pressure system. Industrial gauges are used in manufacturing industries, OEM applications, hydraulic, water treatment and RO industries. The movement provides superior resistance to shock, vibration and pulsation, extends product life and reduces maintenance costs.



COMMERCIAL PRESSURE GAUGES

MODEL M1.06

KEY FEATURES

- Stainless steel case & measuring system
- Rugged construction
- Dry & liquid filled
- Design according to EN 837-1

SPECIFICATIONS

Accuracy	:	± 1.6% of Span (Standard)
Process Conn. Location	:	Direct Bottom & back
Process Conn. Size & Type	:	¼" BSP (M), ¼" NPT (M), (Other sizes on request)
Ingress Protection	:	IP68
Dial Size	:	50mm (2"), 63mm (2½")

TEMPERATURE LIMITS

Version	Ambient	Process
Dry	-40 to 65 °C	-40 to 200 °C
Glycerin filled	-20 to 65 °C	-20 to 100 °C
Silicone filled	-40 to 65 °C	-40 to 100 °C

CASE FILLING (OPTIONAL)

The gauges can be filled with different kind of fill fluids.
Available fill fluids are:

- Glycerin fluid (99.7%)
- Silicon fluid
- Other fill fluids can be offered on request

CERTIFICATION & APPROVALS

Calibration Certificate	:	Gauges are factory calibrated to full range by default 5 Point Calibration Cert. (Optional)
Material Certification	:	Available as per EN10204 3.1 for wetted parts (Optional) Available as per EN10204 2.1 for non-wetted parts (Optional)
NACE Compliance	:	Available as per MR 01 75/ MR 01 03 (ISO 15156) for wetted parts (Optional)
Approvals	:	ATEX: Conformity acc. to RL 2014/34/EU II 2 GD Ex h T6 (Optional)

APPLICATION

- Food & Beverages
- Engine compressors
- Diesel Engines
- Nuclear power plants
- Pharmaceutical
- Turbines
- Pumps
- Chemicals
- Presses
- Petrochemical industries
- Hydro cleaning machine
- Refrigerating plants & gaseous / liquid media.

PRESSURE LIMITS

Steady Pressure	:	Up to FSV
Fluctuating Pressure	:	0.9 x FSV
Over Range Pressure	:	≤ 100 bar: 1.3 x FSV
(Short Term)	:	≥ 100 bar: 1.15 x FSV

MATERIAL OF CONSTRUCTION

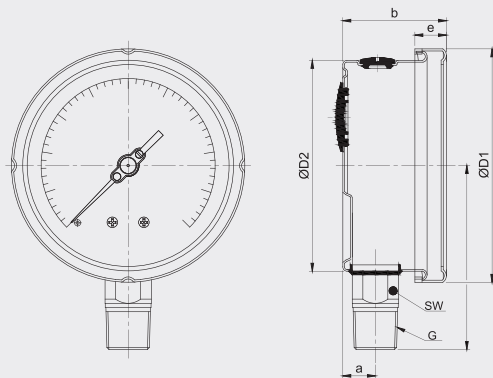
Case & Bezel Ring	:	SS 304
Bourdon	:	SS 316L
Movement	:	SS 304
Pointer	:	Aluminum, Black colored Zero adjustable or Fixed Pointer
Dial	:	Aluminum, Black graduation on white background
Window	:	Plexi glass
Window gasket & Blowout disk	:	Neoprene

COMMERCIAL PRESSURE GAUGES

MODEL M1.06

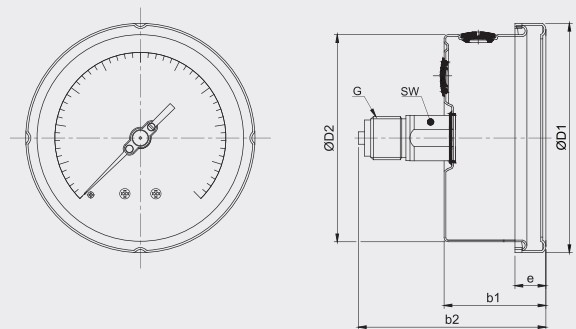
DIMENSIONAL DRAWINGS

Direct, Bottom Connection



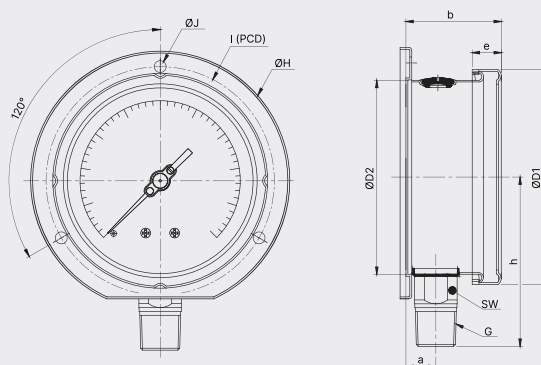
NS	Dimensions in mm								Weight in gm	
	a	b	ØD1	ØD2	e	G	h±1	SW	Dry Version	Glycerin Version
50	12	34	61	50	12	1/4"	50	14	180	230
63	12	34	70	61	12	1/4"	57	14	210	260

Direct, Center back connection



NS	Dimensions in mm							Weight in gm	
	b1	b2	ØD1	ØD2	e	G	SW	Dry Version	Glycerin Version
50	34	58	61	50	12	1/4"	14	180	230
63	34	58	70	61	12	1/4"	14	210	260

Back Flange, Bottom Connection



NS	Dimensions in mm										Weight in gm		
	a	b	ØD1	ØD2	e	h±1	G	ØH	I (PCD)	ØJ	SW	Dry Version	Glycerin Version
50	12	34	61	50	12	50	1/4"	86	75	3.6	14	190	244
63	12	34	70	61	12	57	1/4"	86	75	3.6	14	220	270

Important Notes: Above drawings are not to scale. All Dimension are in mm. NS = Nominal size. Weights mentioned are approximate and for standard product. Weight can be different after selection of options.

COMMERCIAL PRESSURE GAUGES

MODEL M1.06

TABLE-1 PRESSURE RANGE

bar		kg/cm2		psi		kPa		MPa	
Code	Range	Code	Range	Code	Range	Code	Range	Code	Range
CB36	-1...0.6	CG36	-1...0.6	HP37	-30 inHg/15psi	CK36	-100...60	CM36	-0.1...0.06
CB38	-1...1.5	CG38	-1...1.5	HP39	-30 inHg/30psi	CK38	-100...150	CM38	-0.1...0.15
CB40	-1...3	CG40	-1...3	HP41	-30 inHg/60psi	CK40	-100...300	CM40	-0.1...0.3
CB42	-1...5	CG42	-1...5	HP44	-30 inHg/100psi	CK42	-100...500	CM42	-0.1...0.5
CB45	-1...9	CG45	-1...9	HP46	-30 inHg/150psi	CK45	-100...900	CM45	-0.1...0.9
CB50	-1...15	CG50	-1...15	HP50	-30 inHg/220psi	CK50	-100...1500	CM50	-0.1...1.5
CB54	-1...24	CG54	-1...24	HP53	-30 inHg/300psi	CK54	-100...2400	CM54	-0.1...2.4
BR01	-1...0	KG01	-1...0	PS32	0...10	KP01	-100...0	MP01	-0.1...0
BR04	-0.6...0	KG04	-0.6...0	PS35	0...15	KP04	-60...0	MP04	-0.06...0
BR31	0...0.6	KG31	0...0.6	PS37	0...30	KP31	0...60	MP31	0...0.06
BR35	0...1	KG35	0...1	PS40	0...60	KP35	0...100	MP35	0...0.1
BR36	0...1.6	KG36	0...1.6	PS43	0...100	KP36	0...160	MP36	0...0.16
BR38	0...2.5	KG38	0...2.5	PS46	0...160	KP38	0...250	MP38	0...0.25
BR40	0...4	KG40	0...4	PS48	0...200	KP40	0...400	MP40	0...0.4
BR42	0...6	KG42	0...6	PS51	0...300	KP42	0...600	MP42	0...0.6
BR45	0...10	KG45	0...10	PS55	0...400	KP45	0...1000	MP45	0...1
BR50	0...16	KG50	0...16	PS56	0...500	KP50	0...1600	MP50	0...1,6
BR54	0...25	KG54	0...25	PS57	0...600	KP54	0...2500	MP54	0...2,5
BR57	0...40	KG57	0...40	PS58	0...800	KP57	0...4000	MP57	0...4
BR58	0...60	KG58	0...60	PS59	0...1000	KP58	0...6000	MP58	0...6
BR60	0...100	KG60	0...100	PS60	0...1500	KP60	0...10000	MP60	0...10
BR62	0...160	KG62	0...160	PS61	0...2000	KP62	0...16000	MP62	0...16
BR65	0...250	KG65	0...250	PS64	0...3000	KP65	0...25000	MP65	0...25
BR69	0...400	KG69	0...400	PS66	0...4000	KP69	0...40000	MP69	0...40
BR71	0...600	KG71	0...600	PS68	0...5000				
				PS69	0...6000				

COMMERCIAL PRESSURE GAUGES

MODEL M1.06

MODEL CODING & ORDERING INFORMATION

DESCRIPTION	CODE	M1.06	2	1	B	18BM	S6	XXX	X16
Model Commercial Pressure Gauge	M1.06	M1.06							
Dial Size 50mm (2") 63mm (2.5")	2 25		2						
Version Dry (but fillable) Glycerin filled Silicon Oil filled	1 2 3			1					
Type of Mounting/Connection Direct Bottom connection	B				B				
Process Connection (Size & Type) 1/8" BSP (M) 1/8" NPT (M) 1/4" BSP (M) 1/4" NPT (M)	18BM 18NM 14NF 14NF					18BM			
Bourdon Tube SS 316 Monel 400	S6 M4						S6		
Range To be selected from Table 1 (Other custom ranges available on request)	XXX							XXX	
Other Options Back flange for bottom mounting (SS 304) Front flange for lower back/center back mounting (SS 304) Maximum Reading Pointer Fillable liquid Glycerin Dampening liquid glycerin filled Toughened glass Acrylic Glass Plexi Glass Instrument Glass Calibration Certificate Material test certificate Certificate for Oxygen Service Helium leak test Custom dial design SS Tag plate SS 316 Case & bezel	XBF XFF XMR XFG XLG XWT ACG PLG IMG X16 X17 X20 X22 X29 X26 X31								X16

SAMPLE ORDERING CODE:

M1.06-2.1.B.18BM.S6.XXX.X16

Note: Specifications and dimensions given in this product catalogue represents the state of engineering at the time of printing. Modifications may take place and material specified may be replaced by others without prior notice.